

# ATTACHMENT A

**100 PER CENT CONCEPT SUMMARY**

## GREEN SQUARE LIBRARY & PLAZA

city of sydney



## GREEN SQUARE LIBRARY & PLAZA



**LEGEND**

- Transport Place
- Drying Green
- Library Garden
- Library Tower
- Data Tower

### COMMUNITY + OPEN SPACES

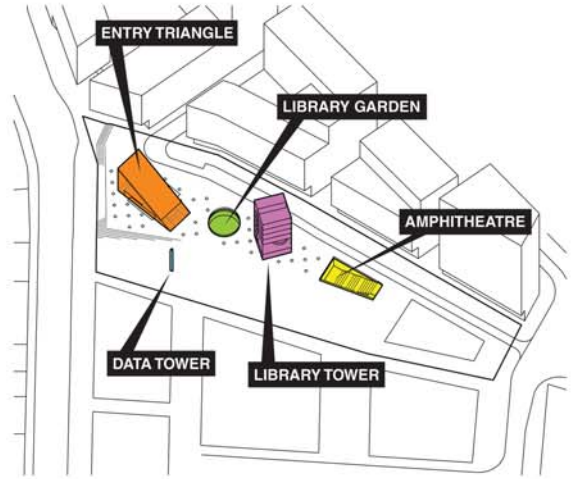
Public open space is proposed at either end of the plaza. The proposed spaces include:  
 - Transport Place  
 - The Drying Green

The contrast of proposed hardstand between the Drying Green and Transport Place is strong. Transport place is proposed as mostly hard and paved, while the drying green is proposed as generally soft with a high amount of turf and planting.

The Library Plaza has the opportunity to be the transition between the extremes, with a gradation of turf on the ground plane, decreasing from east to west across the plaza.

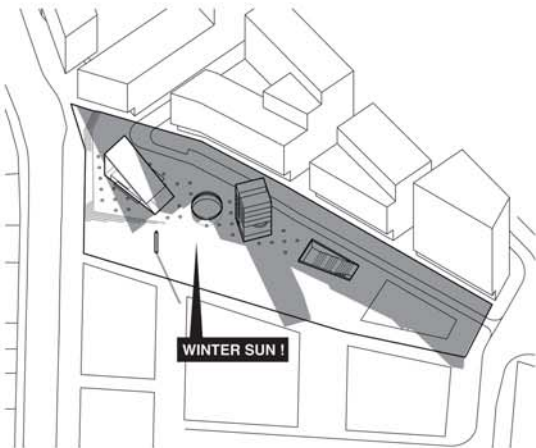
### Program

Milestone	Date
100% Concept Design	January 2014
Community Update (Green Square Info-hub)	February 2014
Scope Report to Council	April 2014
Development Application lodged	May 2014
Tender Early Works (Remediation, bulk excavation + shoring)	August 2014
Construction Early Works	Jan 2015
Tender Main Works	Feb 2015
Construction Main Works	August 2015
Completion	Mid 2017



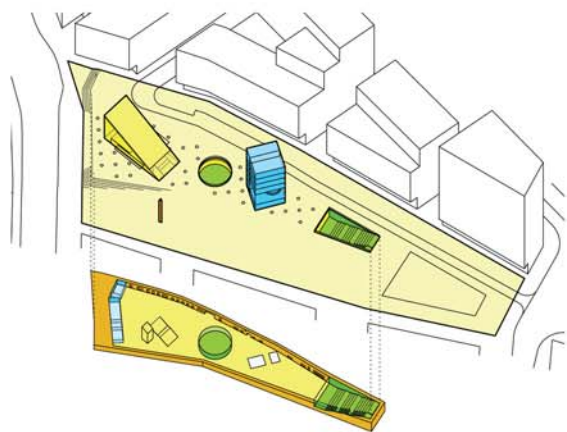
### SCATTERED ARCHITECTURAL ELEMENTS

- A set of geometric volumes are 'scattered' across the plaza. Along with housing their own unique activities, they also bring light, air, visual connection to the 'community room', and activate the plaza.
- The 'Entry Triangle' acts as the main entry gallery and houses a cafe.
- The circular 'Library Garden' is in the centre of the library and provides a garden space for the community room.
- The square 'Library Tower' holds the enclosed activities of the library and provides views across the plaza.
- The 'Open Air Green Amphitheatre' provides grass seating steps leading to the secondary library entry.
- The 'Data Tower' provides information to the plaza and has the capacity to hold projectors for events.
- These rudimentary forms are easy to identify, and designed to be viewed from all angles, even from the towers above.



### SOLAR AMENITY

- By placing the plaza over the library, solar amenity to the plaza is maximised
- Skylights and glazed facades allow ample daylight into the library.
- Entry Triangle and Library Tower strategically located and oriented to minimise shadow cast.
- Maximising sunlight into the plaza will ensure its long term viability as the heart of Green Square Town Centre.
- In summer tree canopy will provide shade.
- Development of surrounding sites will mean solar access to plaza will evolve with time. Design will need to work at all stages.



### PROGRAM DISTRIBUTION

- The briefed program has been divided into uses that require a room, and those that can take place in an open environment, whether that be internal, or external.
- Open plan programs in the brief have been grouped in a large open plan floor under the plaza which forms the main space of the library.
- Programs that need a room have been stacked on top of each other and form the Library Tower.
- This is the underpinning logic for the design of our proposal and is the basis for creating an 'Urban Living Room' at Green Square.
- This approach responds to the programmatic requirements of a Plaza, Library and Community Centre, as well as a way of life afforded by Sydney's temperate climate.











**SUSPENDED LIGHTING**  
Design of lighting installation to be developed during DD lighting designer.

**DIGITAL NOTICE BOARD**  
Large digital notice board inside Entry Triangle, displays both inside and outside space and runs 24 hours with info about the library and plaza.

**'STOP AND GO' FURNITURE**  
Flexible furniture that can be moved around during events and that promotes temporary, shared use.

**COMMUNITY TABLE**  
Generous shared table that serves both cafe and library users

**SERVICES PLINTH**  
Cafe, toilet, storage and waste concealed within a plinth in the space. The outside is used to display newspapers and magazines and provide a backdrop to activities in the space.











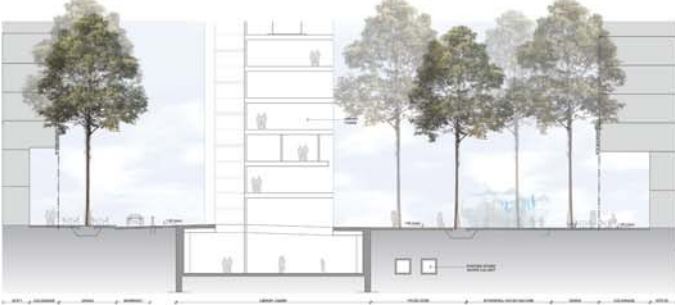
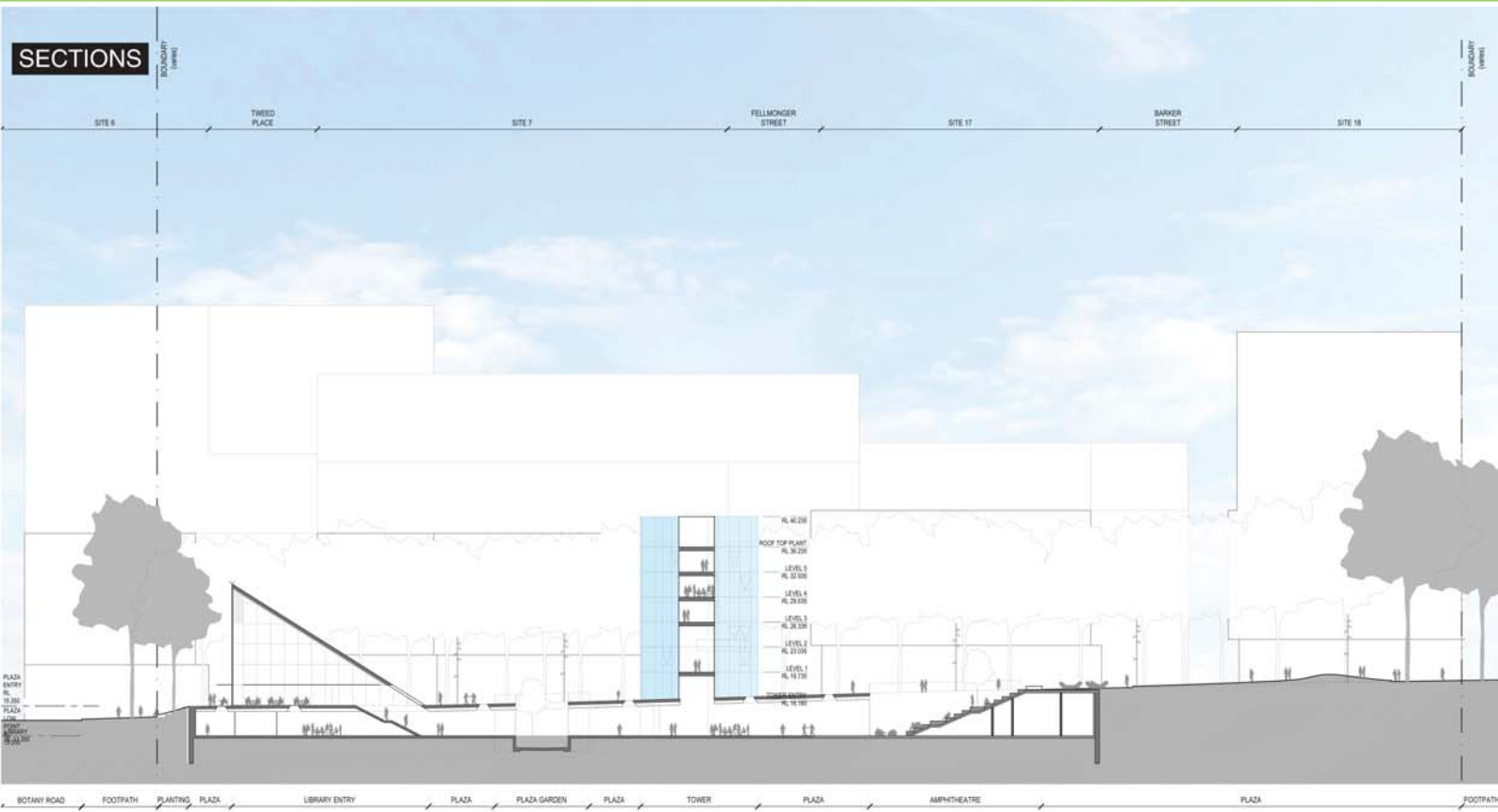
## GREEN SQUARE LIBRARY & PLAZA

### TOWER PLANS



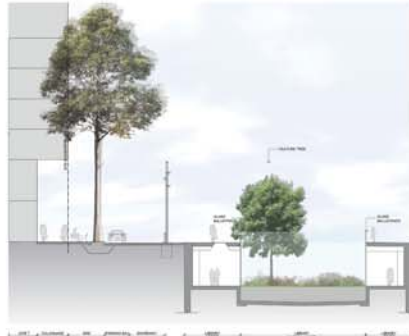
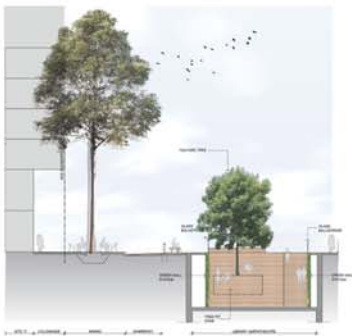
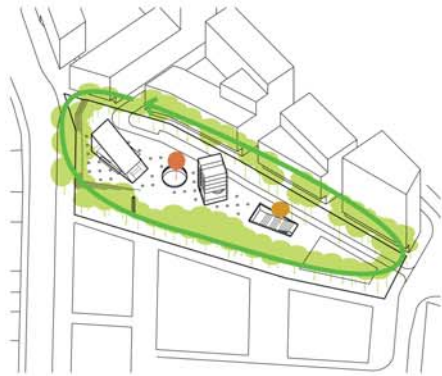


## GREEN SQUARE LIBRARY & PLAZA



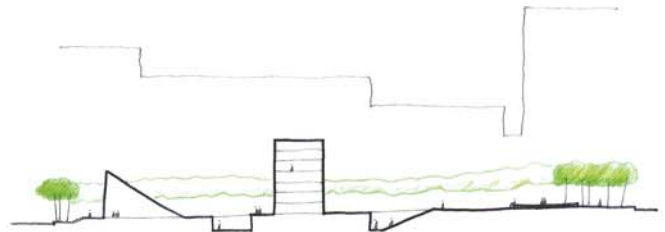
**ILLUSTRATIVE SECTIONS**

- (C) CENTRAL PLAZA**
- Integrate public realm with adjacent buildings and colonnades along the site southern boundary
  - Equiparent water feature play zone
  - Opportunity to extend Green Square Plaza under the colonnade of the built form
  - Allow areas of transition and buffers into the plaza
  - Maximum grade of 1:40 to comply with Australian Standards



**ILLUSTRATIVE SECTIONS**

- (H) NORTHERN TRANSIT CORRIDOR - SHARED-WAY CONDITION**
- (1)**
- Allow for transit corridor along northern edge of site boundary
  - Integrate public realm with adjacent buildings and colonnades
  - Opportunity to integrate the transit corridor into the overall public domain
  - Allow areas of transition and buffers into the plaza through tree locations and surface treatments
  - Maximum grade of 1:40 to comply with Australian Standards



**THE GREEN FRAME**

- The plaza is framed by a grove of trees, giving it a green edge, and setting the stage for the activity of the library and plaza
- The Library Garden and Amphitheatre have feature trees making each a unique setting within the project
- Deciduous trees used on the eastern end of the plaza to allow winter sun. This canopy to provide adequate summer shade
- Trees help to mitigate the scale of the surrounding built environment